

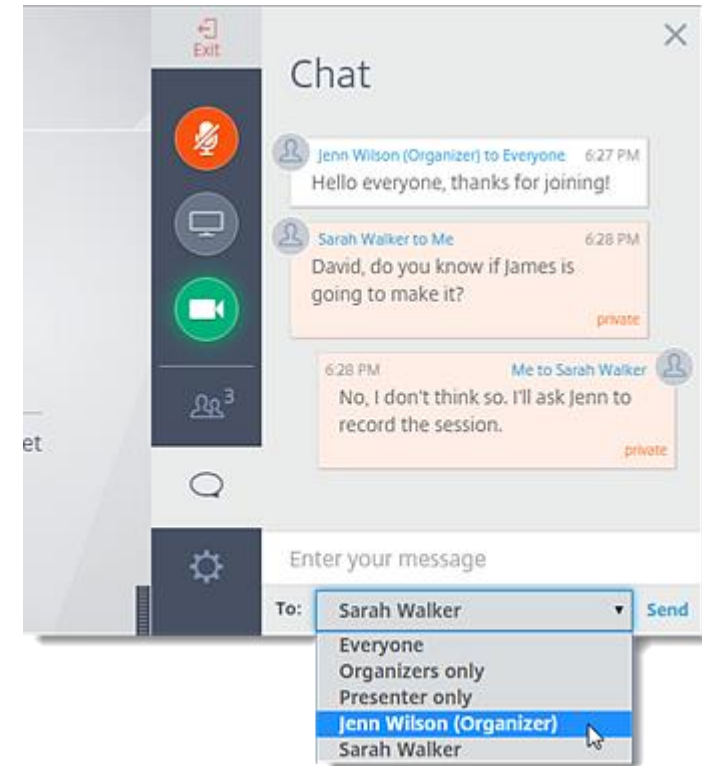


# Industry Advisory Committee

ARTS, A/V TECHNOLOGY, AND COMMUNICATIONS  
AUGUST 28, 2018

# GoToWebinar Functionality

- Toolbar with orange arrow to expand or collapse
- Muting your microphone
- Raise your hand feature
- Chat and question box – drop down menu to respond to presenter or entire group



# August Webinar Agenda

1. Committee Member Introductions
2. Roles and Responsibilities
3. Timeline
4. Programs of Study

# Industry Advisory Committee Introductions

## Arts, A/V Technology, and Communication Advisory Committee Members

Name	Position	Email Address
Angie Reza Tures	Writer/Director, Femme Frontera	femmefrontera@gmail.com
Brett Parrish	Instructor, Barbers Hill ISD, Game Day Crew Rockets, Astros, Dynamo, Dash, Rice Athletics, Houston Livestock Show and Rodeo, and Texas Southern Football	bparrish@bhisd.net
Brett Young	CEO, Surefoot Studios	brett@surefootstudios.com
Carl Settles	Founder, Executive Director E4 Youth	carl@e4youth.com
Christine Donovan	Instructor, Northside ISD	christine.donovan@nisd.net
Cynthia Hougardy	Regional Manager, FIDM	chougardy@fidm.edu
David Saenz	Executive Director CTE, Fort Worth ISD	david.saenz@fwisd.org
Eva Coleman	Independent Producer, National Black Journalist Association	producedbyeva@gmail.com
Jamie Everett	Leander ISD, CTE Coordinator	Jamie.Everett@leanderisd.org
Kathy Blankenship	Instructor, Manor ISD	Kathy.Blankenship@manorisd.net
Kenneth Dixon	Station Manager, LISD TV	Kenneth.Dixon@lubbockisd.net
Lorena Knight	Texas Workforce Commission	Lorena.knight@twc.state.tx.us
Michelle Redmond, MFA	Senior Lecturer, Department of Media Arts, University of North Texas	Michelle.Redmond@unt.edu
Randy Hudson	Instructor, Belton ISD	randy.hudson@bisd.net
Scott Cawthron	KLBK 13TV	scawthron@klbk13.tv
Sharon Welkey, PhD	Dean of Digital Media and Design, University of Incarnate Word	welkey@uiwtx.edu
Shonda Tindall	Instructor, Mesquite ISD	stindall@mesquiteisd.org
Ted Irving	Magnet Coordinator, Houston ISD	tedirving@yahoo.com
Ya'Ke Smith, MFA	Associate Professor of Film Education University of Texas , Education Representative TXMPA	yake@austin.utexas.edu

# Meeting Norms

- Being student focused
- Circle of trust
- Assume positive intent
- Speak freely
- Balance urgency with patience
- Monitor your airtime

# Roles and Responsibilities

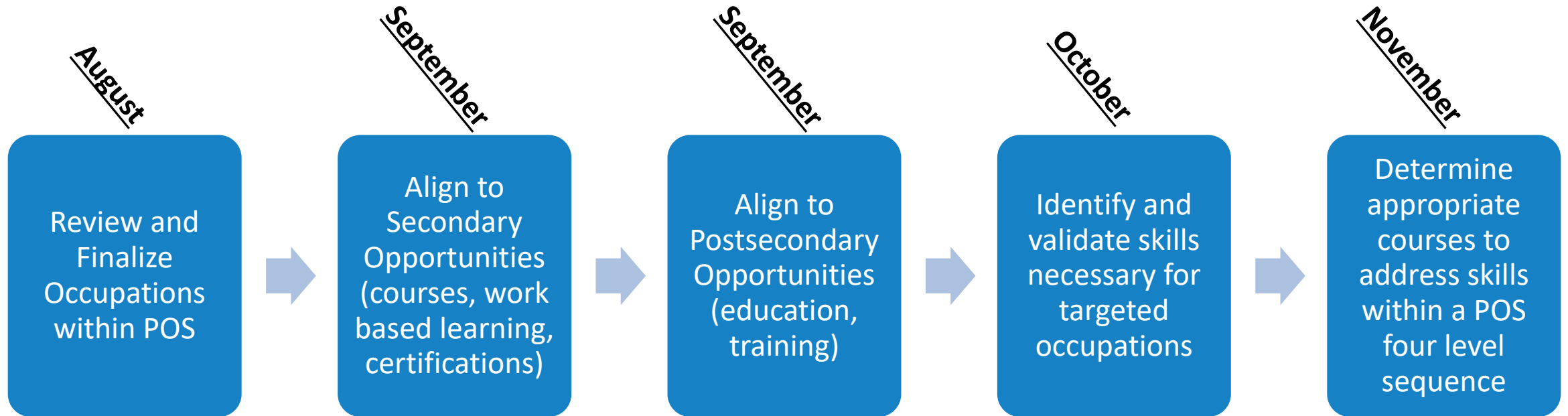
## Committee Members

- Review occupations and skills related to Programs of Study
- Determine alignment of skills, secondary opportunities, and postsecondary opportunities
- Create course sequencing options for implementation of Programs of Study

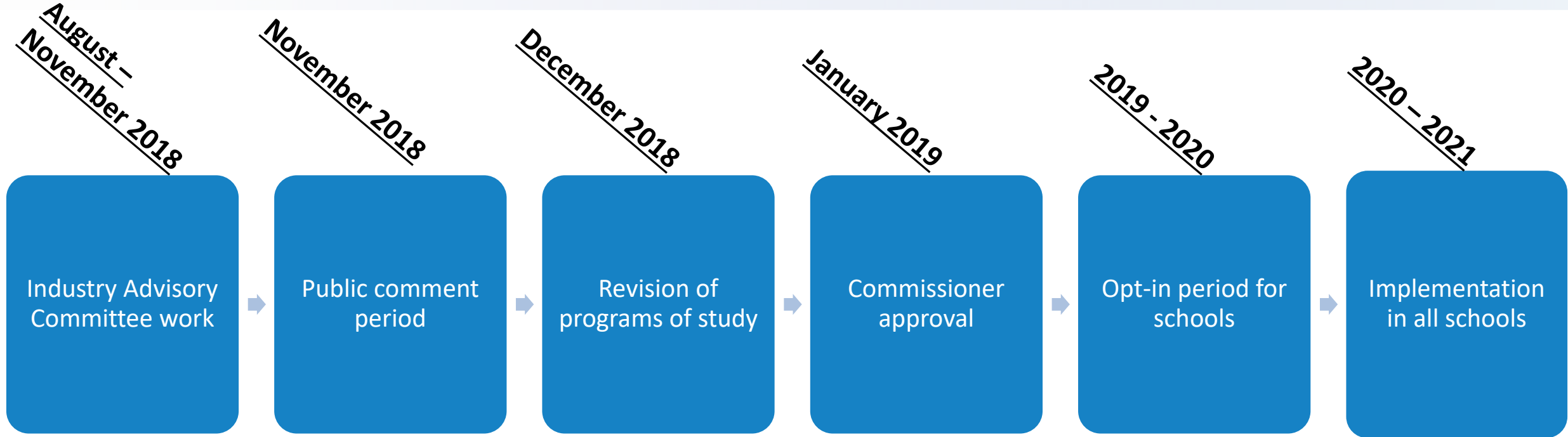
## TEA Staff

- Collection of labor market data
- Identify proposed Programs of Study from labor market data
- Utilize committee input to define Programs of Study
- Communicate information regarding Programs of Study to the field

# Committee Timeline



# Project Timeline





# Program of Study Methodology Data

## EMSI\*

## Labor Market Information Expert

18B data points from dozens of government data sources, updated quarterly.

Hundreds of millions of online job openings

>100M million U.S. individuals' employment and education profiles

Over 40M individual compensation observations

Custom Crosswalks

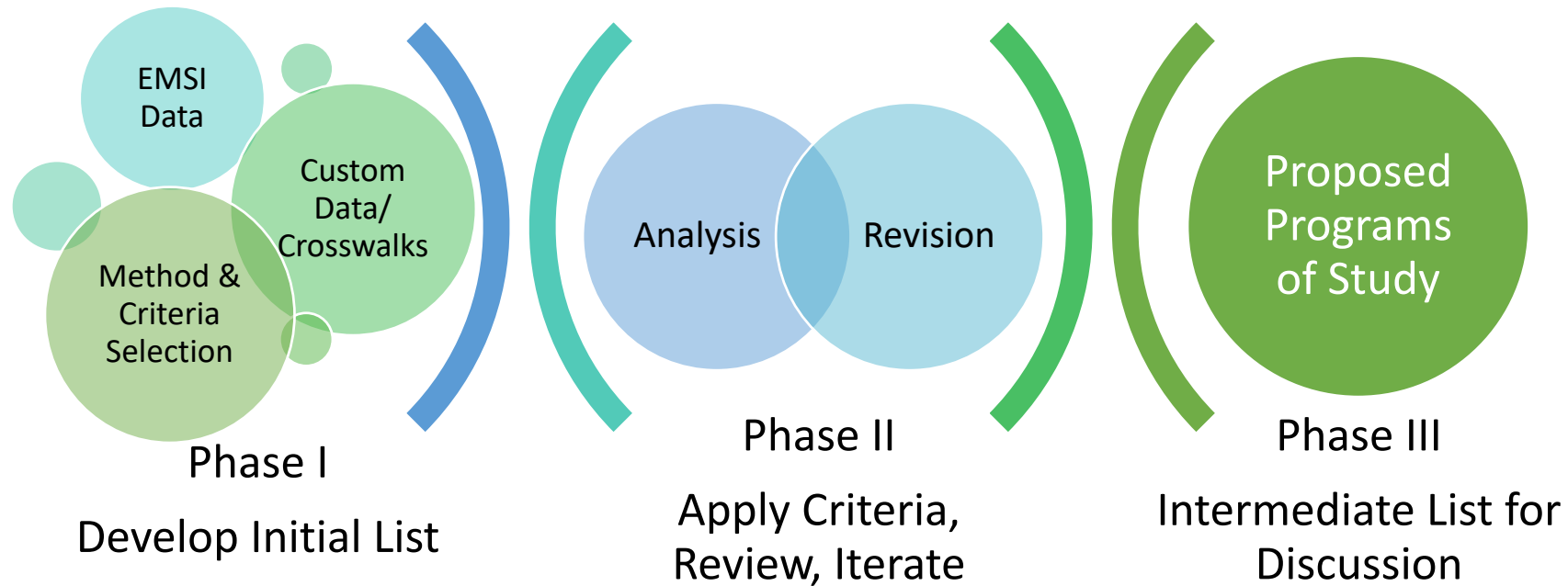
Methodology Analysis and Recommendation

Texas postsecondary (IPEDS) completers

Texas LWDA Data

\* EMSI information can be found at: <https://www.economicmodeling.com/data/>

# Program of Study Methodology Overview



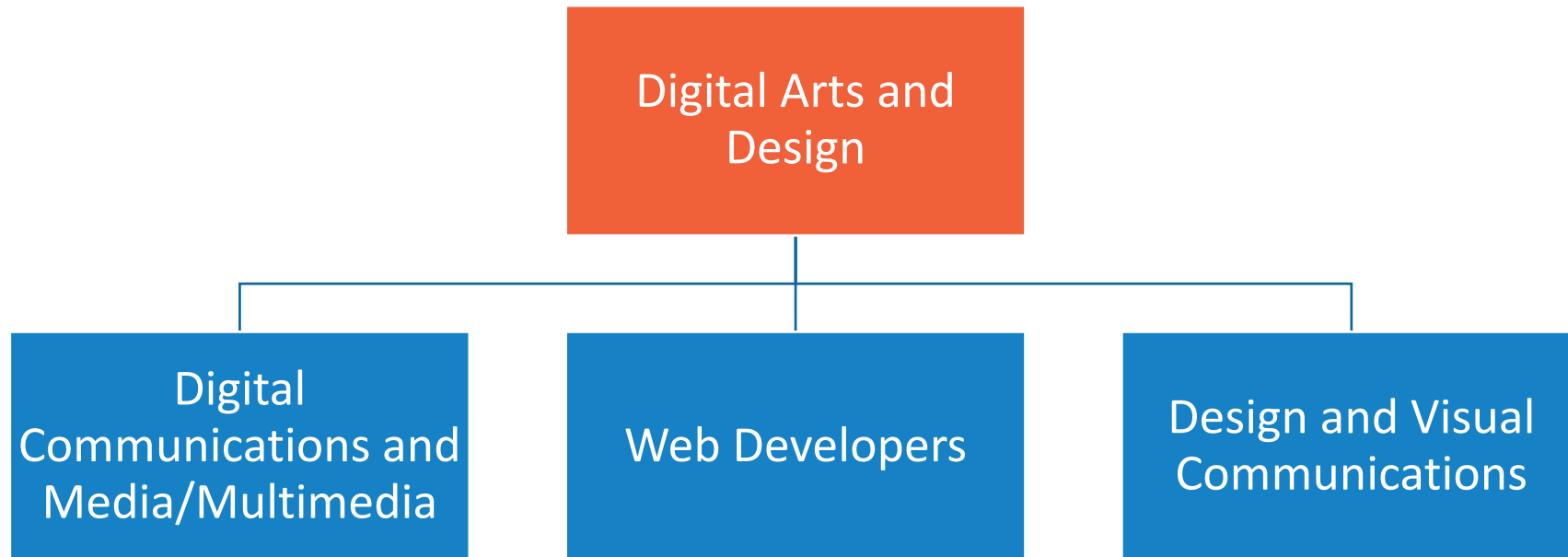
# What is a Program of Study?

## **A Program of Study should include:**

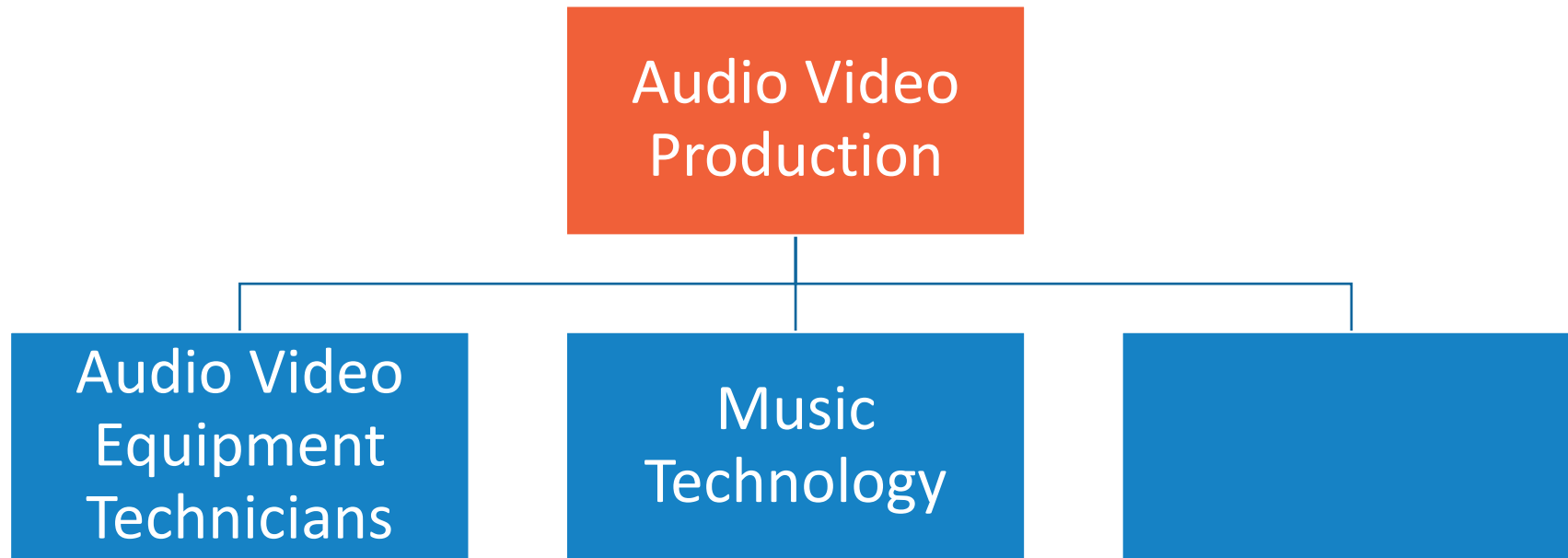
- **A sequence of non-duplicative secondary courses supporting a defined area of careers and embedding academic and technical content**
- **High-school work-based learning**
- **Industry Based Certifications needed to obtain careers**
- **Postsecondary education and training opportunities tied to career entry points**
- **Multiple education and training exit points along the career progression**

**New programs of study are essential for meeting federal requirements for Perkins and ensuring CTE concentrators are prepared to earn a valued credential.**

# Programs of Study Overview



# Programs of Study & Occupations

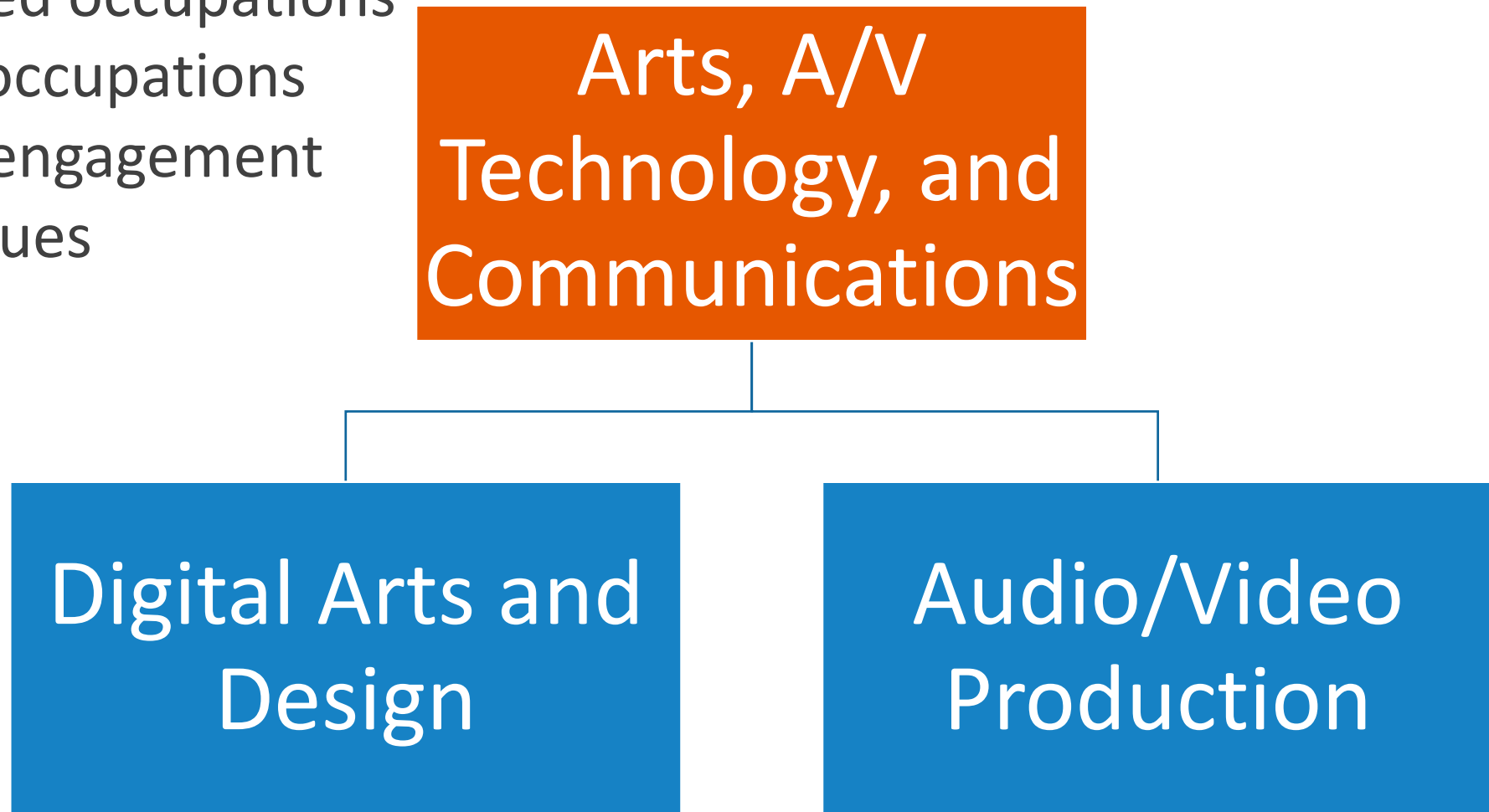


# Occupations Not Meeting Criteria

Job	Texas Median Annual Salary	Projected Growth	Annual Openings
27-1022 Fashion Design	\$49,712	23%	62

# Programs of Study Overview

- Misaligned occupations
- Missing occupations
- Student engagement
- Other issues



# Next Steps

- **Postsecondary programs:**

Opportunities for students to continue their education and training beyond high school. This includes Level I and II certificates, apprenticeships, associate, and bachelor's degree programs.
- **Work based learning:**

Work-based learning is a continuum of intentional activities and experiences designed to expand the boundaries of the classroom and prepare students for future career opportunities.
- **Work-based learning provides opportunities for students to:**
  - apply knowledge learned in the classroom;
  - explore potential career options;
  - engage with business and industry practitioners; and
  - develop essential 21st century skills.



## Next Steps

- Review revisions to programs of study
- Prepare for Job Profile validation
- Web meeting: October 2, 2018 at 10am CST
- In-person meeting: November 9, 2018 in Austin (details forthcoming)
- Exit Ticket:

[https://tea.co1.qualtrics.com/jfe/form/SV\\_85EJ9pepzfdL6IZ](https://tea.co1.qualtrics.com/jfe/form/SV_85EJ9pepzfdL6IZ)

- Follow up request

[https://tea.co1.qualtrics.com/jfe/form/SV\\_bNuJhJd3IMZQuPP](https://tea.co1.qualtrics.com/jfe/form/SV_bNuJhJd3IMZQuPP)

For more information, please contact:

Laura Torres

[Laura.Torres@tea.texas.gov](mailto:Laura.Torres@tea.texas.gov)

512-936-5922

Ryan Merritt, Statewide CTE Director

[Ryan.Merritt@tea.texas.gov](mailto:Ryan.Merritt@tea.texas.gov)